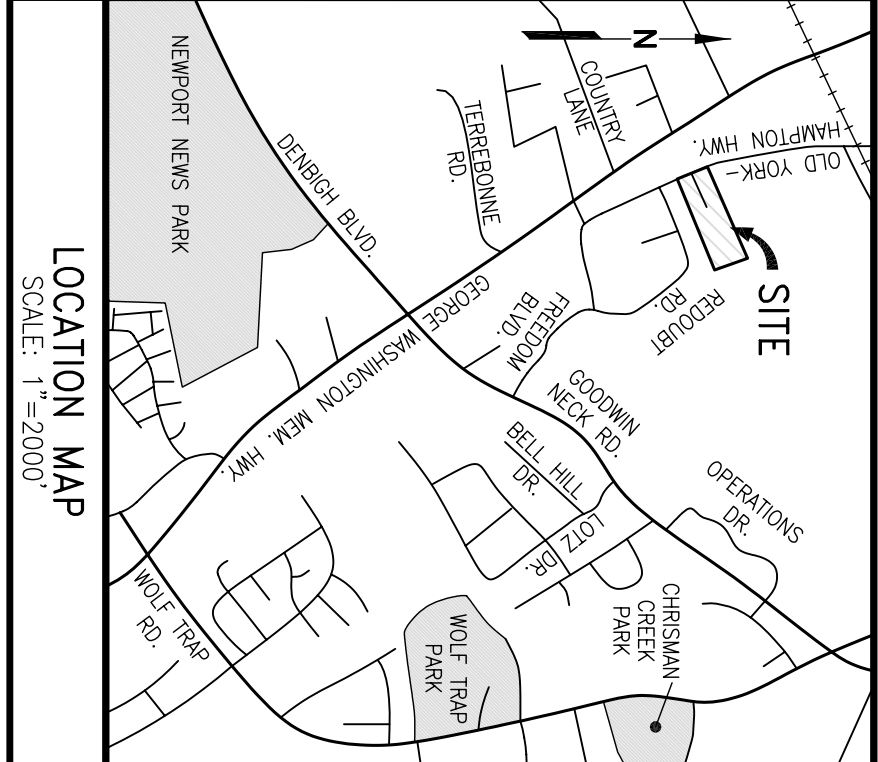
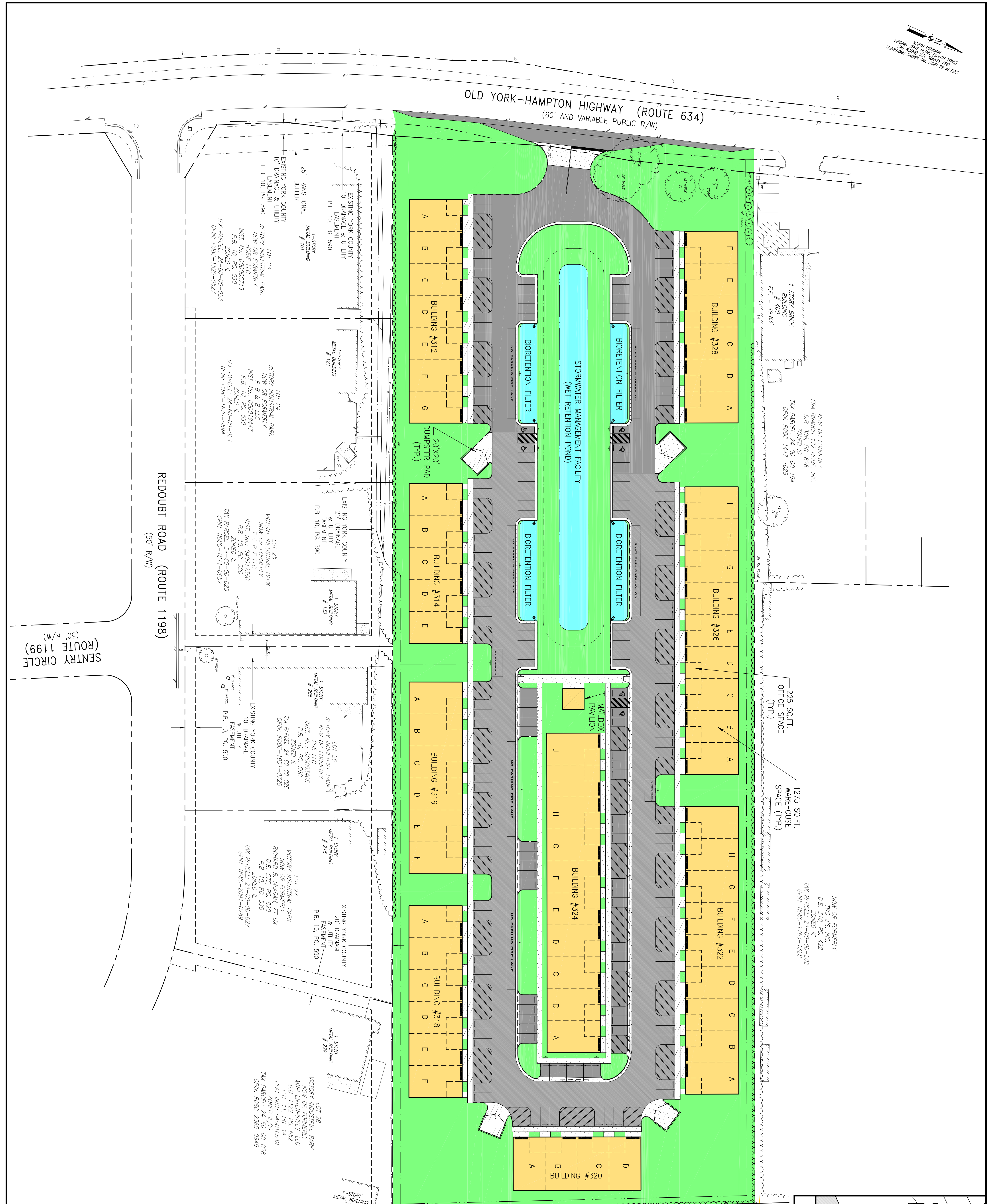


OLD YORK-HAMPTON HIGHWAY (ROUTE 634)  
(60' AND VARIABLE PUBLIC R/W)

REDOUBT ROAD (ROUTE 1198)  
(50' R/W)

SENTRY CIRCLE (ROUTE 1199)  
(50' R/W)



REVISIONS		
REV.	DATE	DESCRIPTION

LOCATION MAP  
SCALE: 1"=200'

NOW OR FORMERLY  
COUNTY OF YORK  
D.B. 346, PG. 92  
P.L. 9, PG. 457  
PLAT INST. 040010539  
TAX PARCEL: 24-60-00-181  
G.P.N. R08C-3288-1358

LOT 28  
VICTORY INDUSTRIAL PARK  
NOW OR FORMERLY  
MRP ENTERPRISES, LLC  
D.B. 112, PG. 62  
D.B. 11, PG. 12  
PLAT INST. 040010539  
ZONED I/L/VG  
TAX PARCEL: 24-60-00-028  
G.P.N. R08C-2365-0849

EXISTING YORK COUNTY  
20' DRAINAGE  
& UTILITY  
EASEMENT  
P.B. 10, PG. 590

LOT 28  
VICTORY INDUSTRIAL PARK  
D.B. 1122, PG. 652  
P.B. 11, PG. 14  
PLAT INST. 040010539  
TAX PARCEL: 24-60-00-028  
G.P.N. R08C-2365-0849

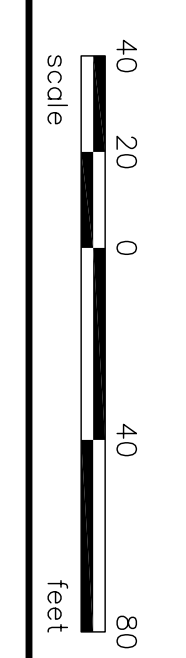
LOT 27  
VICTORY INDUSTRIAL PARK  
NOW OR FORMERLY  
RICHARD B. McDONALD, ET UX  
D.B. 575, PG. 820  
P.B. 10, PG. 590  
TAX PARCEL: 24-60-00-027  
G.P.N. R08C-2091-0789

LOT 26  
VICTORY INDUSTRIAL PARK  
NOW OR FORMERLY  
T.C.R.E. LLC  
INST. NO.: 020003405  
P.B. 10, PG. 590  
TAX PARCEL: 24-60-00-026  
G.P.N. R08C-1951-0720

LOT 25  
VICTORY INDUSTRIAL PARK  
NOW OR FORMERLY  
T.C.R.E. LLC  
INST. NO.: 040012380  
P.B. 10, PG. 590  
TAX PARCEL: 24-60-00-025  
G.P.N. R08C-1811-0657

LOT 24  
VICTORY INDUSTRIAL PARK  
NOW OR FORMERLY  
INST. NO.: 000019447  
P.B. 10, PG. 590  
TAX PARCEL: 24-60-00-024  
G.P.N. R08C-1670-0594

LOT 23  
VICTORY INDUSTRIAL PARK  
NOW OR FORMERLY  
INST. NO.: 000025213  
P.B. 10, PG. 590  
TAX PARCEL: 24-60-00-023  
G.P.N. R08C-1520-0527



**C-1**

SHEET 1 of 1  
1937.0-06

**ART-RAY CORP.**

ENGINEERING SURVEYING  
200 LUMMIS ROAD  
SUFFOLK, VIRGINIA 23434  
Office: 757.539.8822 Fax: 757.539.6769

YORKTOWN COMMERCE CENTER  
FOR  
YORKTOWN, LLC  
316 OLD YORK-HAMPTON HIGHWAY, YORKTOWN, VIRGINIA  
MAGISTERIAL DISTRICT: NELSON DISTRICT  
SALES EXHIBIT

DRAWN: FAH  
DESIGN: FAH  
CHECKED: FAH

DATE: 1/19/07  
SCALE: 1"=40'  
F.B. PG.

APPROVAL DATE:

REV.	DATE	DESCRIPTION	BY